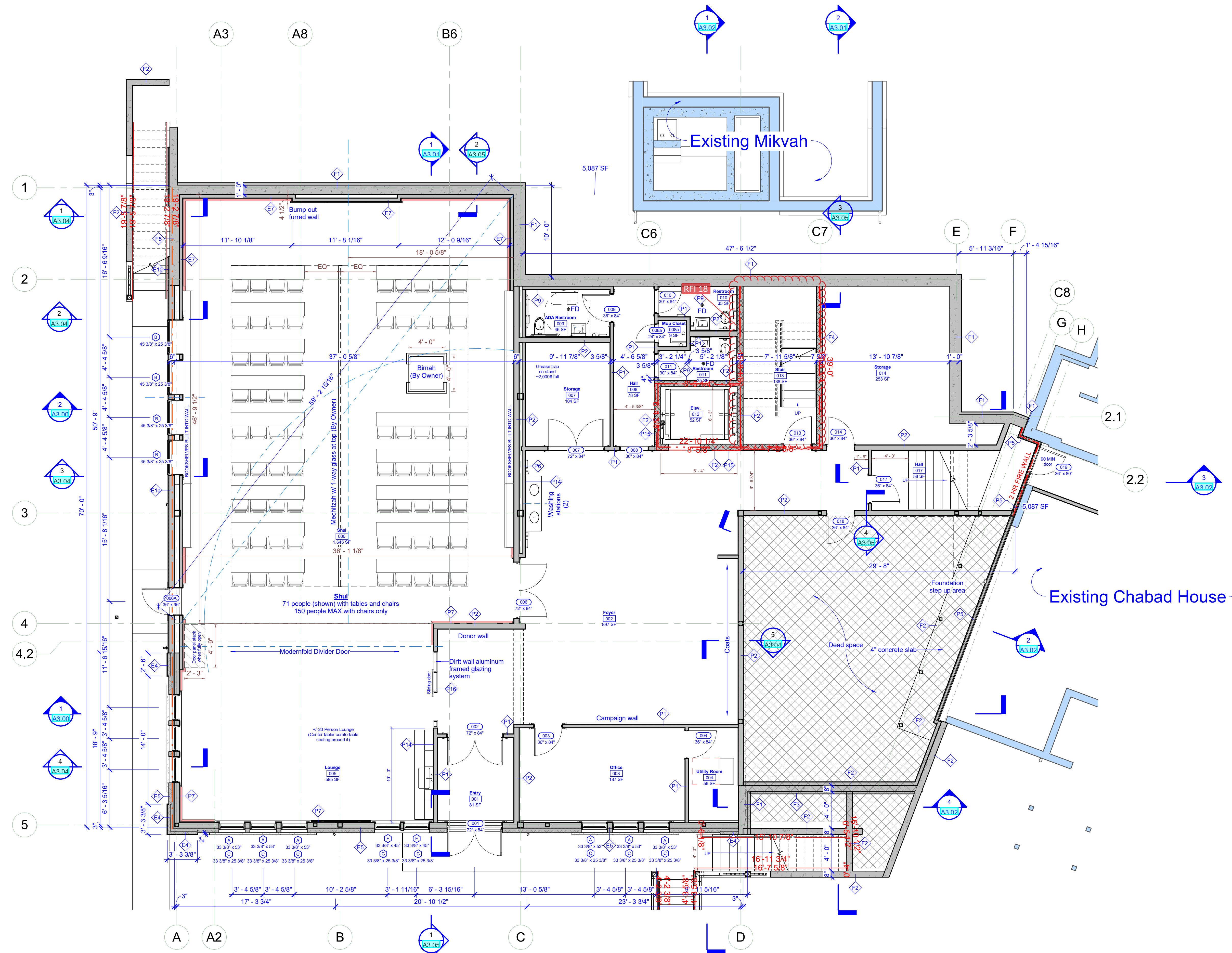


- General Plan Notes -

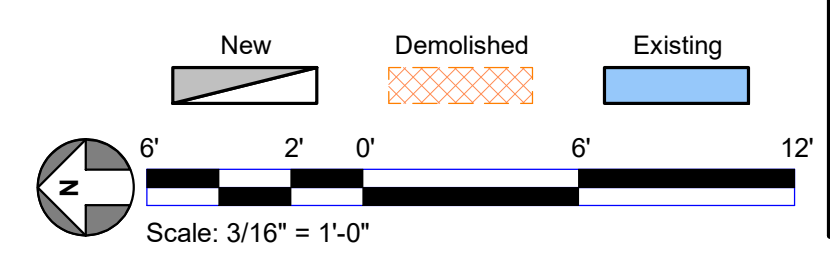
- 1 Dimensions are to face of stud, concrete or masonry unless noted otherwise.
- 2 Dimensions to doors, windows and columns are to centerline unless noted otherwise. Doors and windows without dimensions are to be centered in the host wall.
- 3 Furniture, when shown, represents design intent and is the responsibility of the Owner unless specified in contract documents.
- 4 Refer to structural sheets for beam sizes and additional structural information.
- 5 General Contractor is responsible for disseminating all information included in this drawing set to sub-contractors, vendors and any other concerned parties.



Chabad Center of Ithaca
Chabad Center Expansion
 BID SET

Revision Schedule		
Number	Description	Date

Basement Plan	
Project No:	CHAB03
Date:	09/26/23
Drawn by:	BAD
Checked by:	JKD
A1.00	
Scale:	3/16" = 1'-0"



- General Plan Notes -

- 1 Dimensions are to face of stud, concrete or masonry unless noted otherwise.
- 2 Dimensions to doors, windows and columns are to centerline unless noted otherwise. Doors and windows without dimensions are to be centered in the host wall.
- 3 Furniture, when shown, represents design intent and is the responsibility of the Owner unless specified in contract documents.
- 4 Refer to structural sheets for beam sizes and additional structural information.
- 5 General Contractor is responsible for disseminating all information included in this drawing set to sub-contractors, vendors and any other concerned parties.

Revision Schedule		
Number	Description	Date

Project No:	CHAB03
Date:	09/26/23
Drawn by:	BAD
Checked by:	JKD
A1.01	
Scale: 3/16" = 1'-0"	

