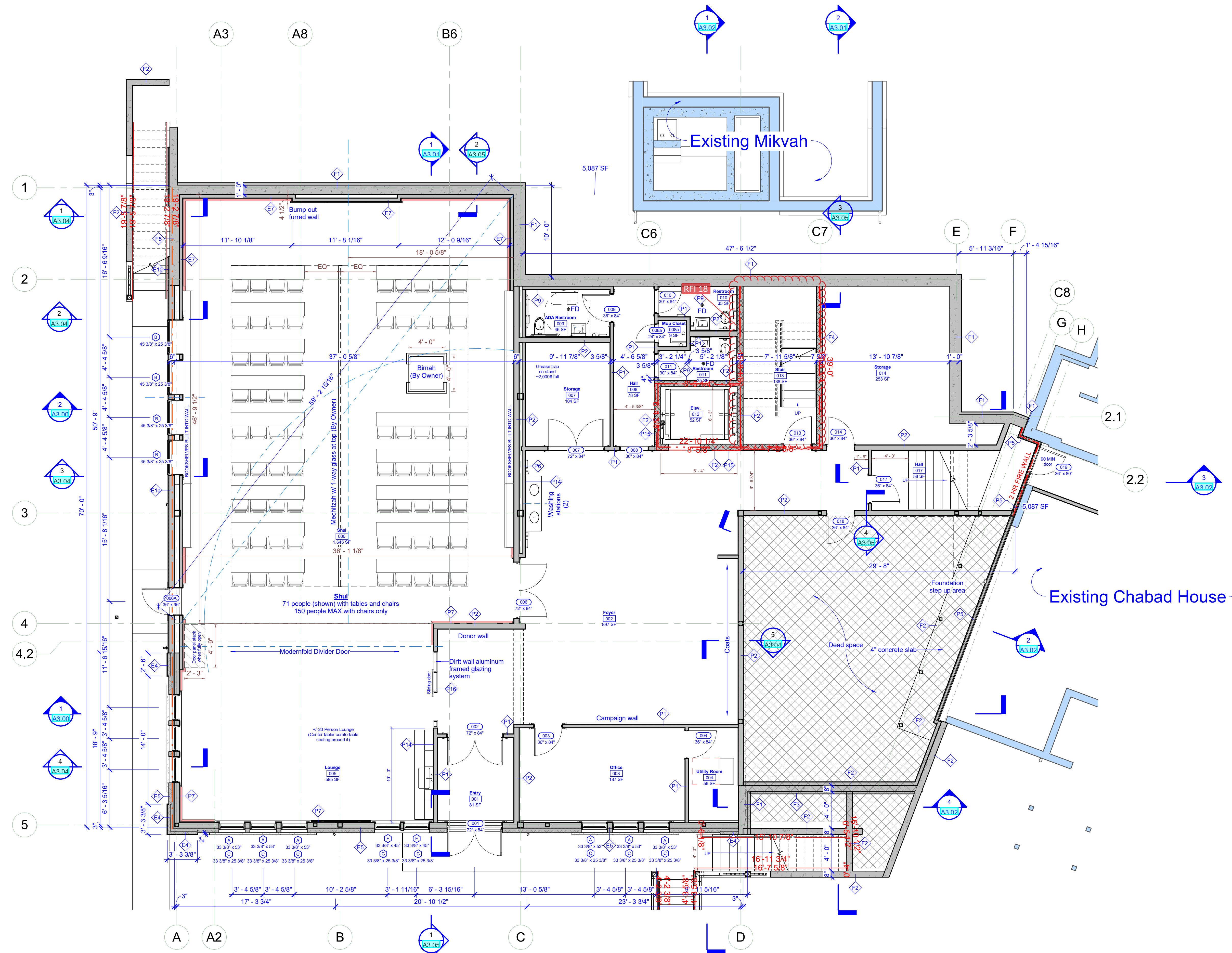


**- General Plan Notes -**

- 1 Dimensions are to face of stud, concrete or masonry unless noted otherwise.
- 2 Dimensions to doors, windows and columns are to centerline unless noted otherwise. Doors and windows without dimensions are to be centered in the host wall.
- 3 Furniture, when shown, represents design intent and is the responsibility of the Owner unless specified in contract documents.
- 4 Refer to structural sheets for beam sizes and additional structural information.
- 5 General Contractor is responsible for disseminating all information included in this drawing set to sub-contractors, vendors and any other concerned parties.



Chabad Center of Ithaca  
**Chabad Center Expansion**  
 BID SET

Revision Schedule		
Number	Description	Date

**Basement Plan**

Project No: CHAB03  
 Date: 09/26/23  
 Drawn by: BAD  
 Checked by: JKD

**A1.00**  
 Scale: 3/16" = 1'-0"

